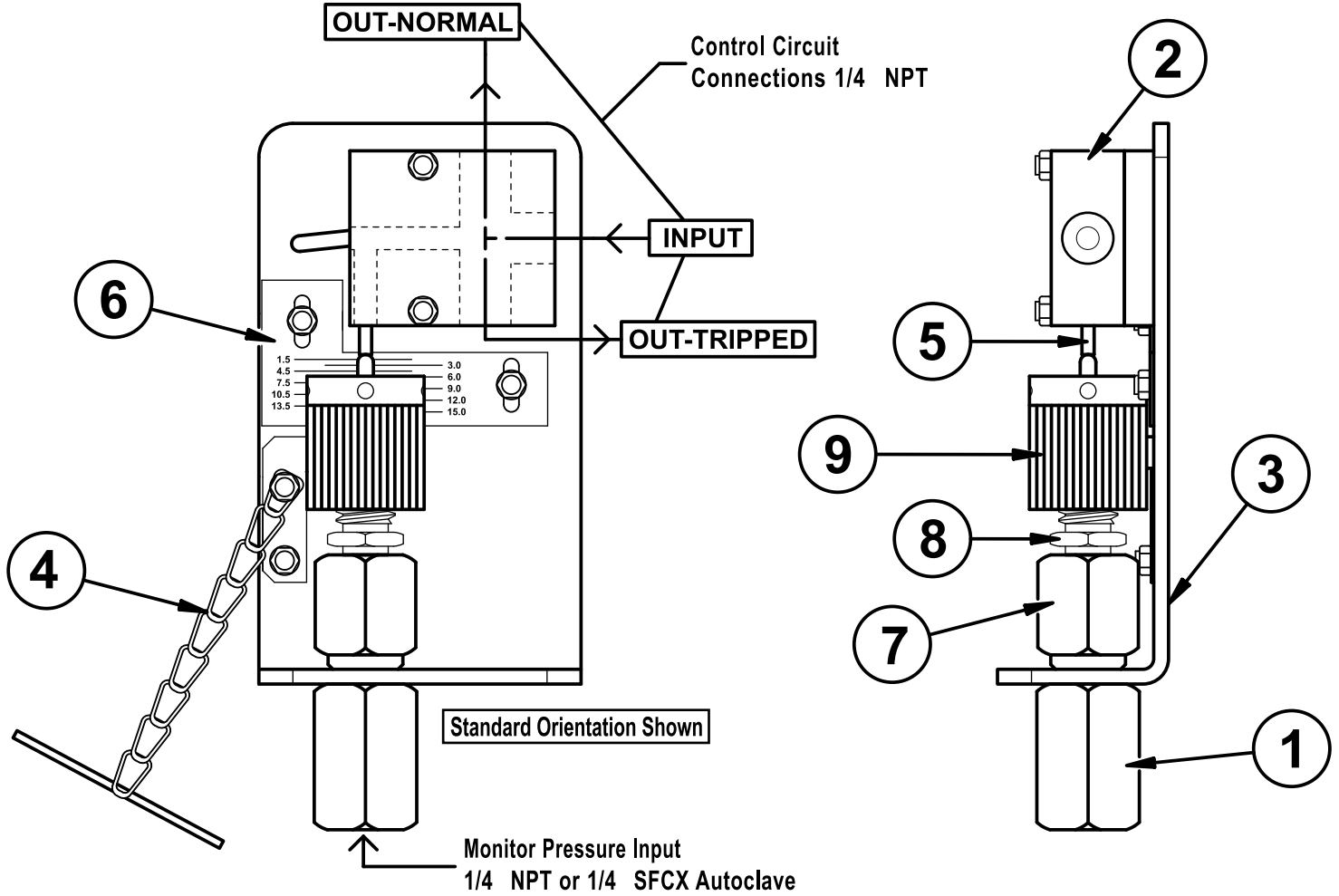


# Parts list-

# Material(s)

1. Hydraulic Connector-
2. Micro Valve-
3. Base Plate-
4. Pressure Setting Bar & Chain-
5. Push Rod-
6. Scale Plate-
7. Body-
8. Spring Housing-
9. Adjustment Nut-

- Stainless Steel  
 Aluminum, Brass, Stainless Steel or \*Electric  
 Stainless Steel  
 Stainless Steel  
 Stainless Steel  
 Stainless Steel  
 Stainless Steel  
 Stainless Steel  
 Brass or Stainless Steel



www.idealspecialty.com

**SHUTDOWN VALVE DESCRIPTION**

Phone: 918-834-1657 Fax: 918-834-5338

PART NO.	ORIENTATION-CALIBRATION	PRESSURE
<b>SVSC-10</b>	STANDARD-CALIBRATED	10,000 lb
<b>SVOC-10</b>	OPPOSITE-CALIBRATED	10,000 lb
<b>SVSC-15</b>	STANDARD-CALIBRATED	15,000 lb
<b>SVOC-15</b>	OPPOSITE-CALIBRATED	15,000 lb
<b>SVSU-10</b>	STANDARD-UNCALIBRATED	10,000 lb
<b>SVOU-10</b>	OPPOSITE-UNCALIBRATED	10,000 lb
<b>SVSU-15</b>	STANDARD-UNCALIBRATED	15,000 lb
<b>SVOU-15</b>	OPPOSITE-UNCALIBRATED	15,000 lb

MICRO VALVE SWITCHES (add to p/n)	
-AL Aluminum	-SS Stainless Steel
-BR Brass	-EL Electric
OTHER OPTIONS (add to p/n)	
-AC	1/4 SFCX Autoclave Medium Pressure Thread on Hydraulic Connector
-AS	All-Stainless Steel Construction
-D	4 to 1 Depressure
-SR	Spring Return on Micro Valve
*ELECTRIC SWITCH CURRENT RATING	
15A-125/250VAC	1/2A-125VDC 1/4A-250VDC

**Sample Part Numbers**

**SVSC-15-AL** = Standard Calibrated 1,500-15,000 w/ Aluminum Micro Valve

**SVOU-15-SS-AC-D** = Opposite Uncalibrated 1,500-15,000 w/ Stainless Micro Valve, Autoclave Fitting and set for 4 to 1 Depressure